

Anatomy of a Recruiting Season

2018—19 vs. 2017—2018

The Applicant Pool

*Total applicants.....	432 (684)
*Total completed applications.....	231 (330)
*Total sent to UofL and other partner universities (i.e. academically qualified).....	97 (146)
*Percentage approved for content.....	100% (98.5%)
*Total number of states/territories in applicant pool.....	40 (42)
*Candidates attending recruiting weekends.....	71 (77)

Recruiting Weekends are jointly funded and hosted by Teach Kentucky (TKY) and Jefferson County Public Schools (JCPS). JCPS provides lodging during the weekend and transportation to and from Louisville. TKY provides meals, trolley tour, a community reception and local transportation.

The Cohort

*Cohort members.....	42 (44)
*Total STEM.....	26 (22)
*Total minority.....	9 (9)
*Total dual-certified.....	15 (9)
*Total undergraduate institutions represented.....	35 (38)
*Total number of states/territories represented.....	21 (22)
*Total percentage of returning Kentuckians.....	12
*Total percentage of retained Kentuckians.....	17

Rowan Claypool, founder and president  
Teach Kentucky  
907 Barrett Avenue, Louisville KY 40204  
(502) 599-5061 | rowan@teachkentucky.com  
Donate: www.teachkentucky.com



- Teach Kentucky is straight forward:
1. We recruit extraordinary, alternative route, prospective teachers who know their content well and have a strong disposition for teaching in public schools.
  2. We support these new teachers and residents in Greater Louisville as they launch their education careers while earning their master’s degree/certification.
  3. The vast majority of our teachers remain in both public education and in Greater Louisville.

- We leverage numerous existing resources to create an attractive, “Constructive Invitation”.
- In short:
1. We create a competitive national recruitment program for local education.
  2. We launch education careers.
  3. We’re building an enduring community of educators who are civically engaged in Greater Louisville.

By the Numbers

- 17 years of recruiting teachers**
- Total teachers recruited: 343
- Percentage recruited from outside Kentucky: 85%
- Percentage completing master’s degree: 90%
- Approximate number of students taught by our teachers daily: 17,000
- Teachers in Jefferson County Public Schools (JCPS): 154
- Our Newest 2019 Teacher Recruits**
- Number of Teachers recruited: 42 from 20 states
- Percentage of STEM content eligible: 62%
- Percentage of Teachers of Color: 20%
- Our Teachers Long-term Commitment**
- Teachers currently teaching in Kentucky: 195





## BUILDING OUR COMMUNITY

We Launch Education Careers

Summary of Teach Kentucky Participants:  
Where Are They Now?

**57%**

Teaching in Kentucky  
195 Participants

**23%**

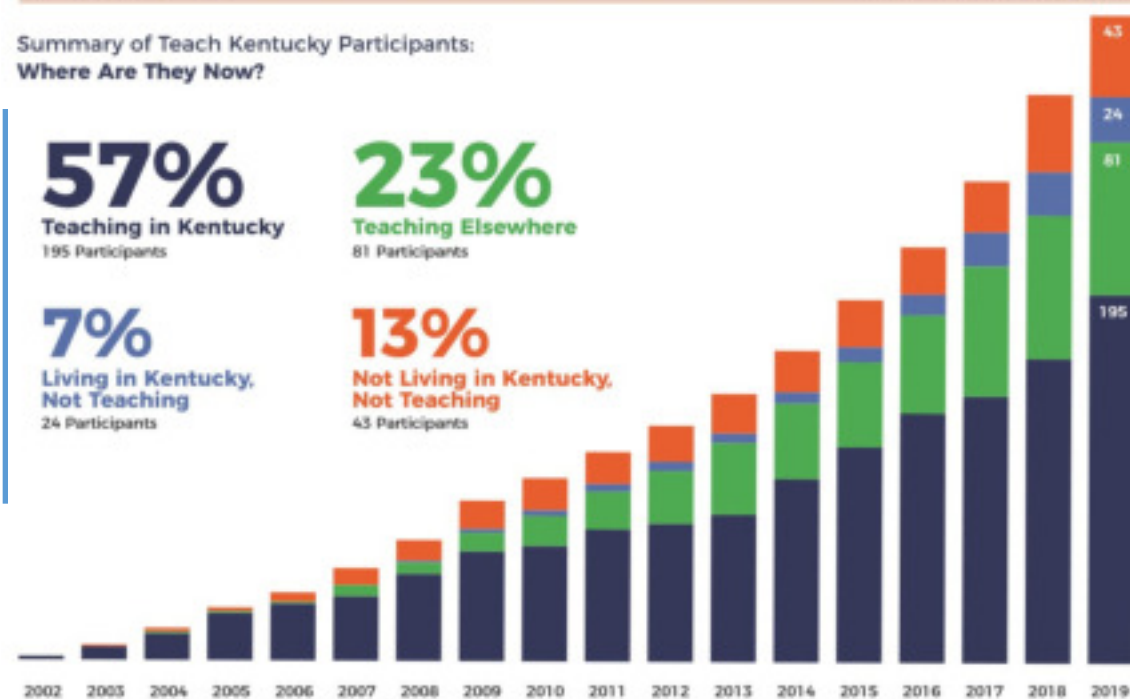
Teaching Elsewhere  
81 Participants

**7%**

Living in Kentucky,  
Not Teaching  
24 Participants

**13%**

Not Living in Kentucky,  
Not Teaching  
43 Participants

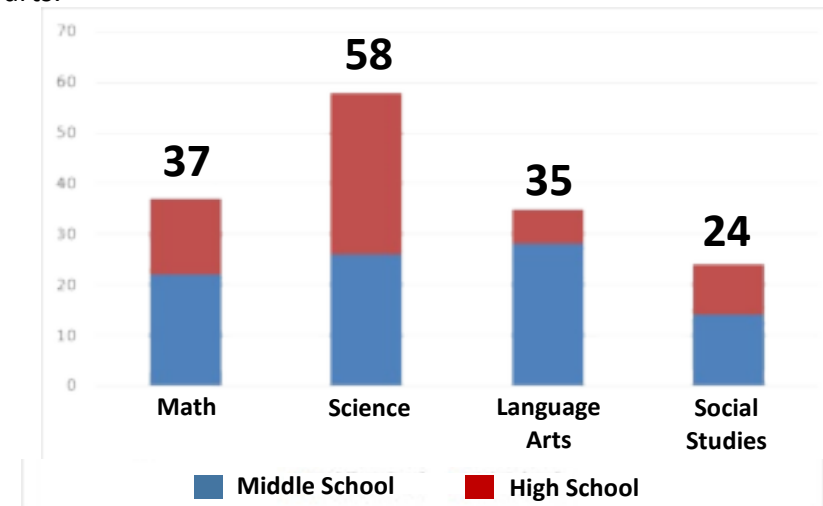


TeachKentucky.com | (502) 599-5061

Teach Kentucky is always focused on retention. The graph to the right shows how our community of teachers is growing over time.

## OUR TEACHERS IN LOUISVILLE

Teach Kentucky is focused on recruiting teachers to meet the critical hiring needs of our local school districts. As seen below, we are making our greatest impact in the core content areas of math, science and language arts.



**TOTAL: 154**

## DID YOU KNOW?



**15**

TKY Teachers are JCPS/OVEC Administrators



**7**

TKY Teachers teach foreign language for JCPS



**5**

TKY Teachers are JCPS Exceptional Child Educators



**4**

TKY Teachers are JCPS ESL Teachers



**85%**

TKY Teachers are recruited from outside of Kentucky



**30%**

TKY Veteran Teachers have purchased homes here



**80%**

TKY Teachers score in the top quartile on Praxis content exam



**164**

Number of colleges/universities where our teachers earned bachelor's degrees



## CASCADE OF BENEFITS

Economic Activity from Your \$1000 Donation

Teach Kentucky would not exist without the generous support of its individual and foundation donors who share the belief in our mission. If you are interested in learning more about how you can support Teach Kentucky, we would love to talk to you about our program. We'll even take you to meet some of our incredible teachers as they do their important work in Louisville's schools! Contact us to find out how you can get involved today!

Per 1 Teach Kentucky Participant



Per an Annual Class of 45 Participants

**\$2,940,750** Of Annual Economic Activity!

Total compensation for current 156 JCPS teachers/employees approximately: ~\$8M annually



Teach Kentucky has organized an impressive "package of benefits" from numerous sources for the support of our participants. Think of the graph to the left as a series of dominoes set up to fall in an organized sequence.